

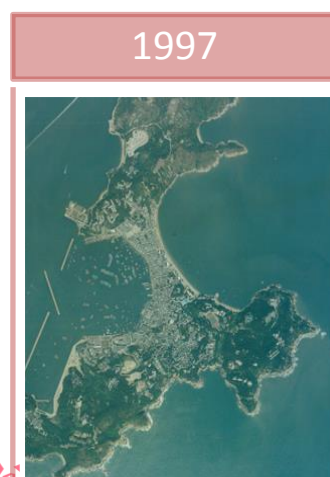
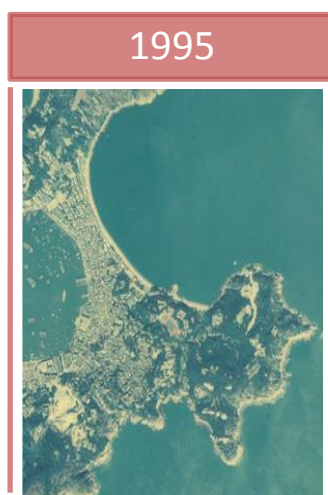
## 長洲明愛陳震夏郊野學園的出現

西貢郊野學習館自開館以來一直求過於供，學校往往要等候兩至三年方能參加一次高級程度生物或地理住宿課程。因此，教育署決定成立更多郊野學習館以滿足對住宿課程的殷切需求。最終香港明愛的職訓練及教育服務部成功於一九九六年成立了第三間郊野學習館(郊野學園)。

與前職業訓練及教育服務部總主任李崇德太平紳士及教育署前首席督學羅慶倫先生的訪問中，我們可以歸納明愛能成功建立郊野學園長洲之原因：

1. 明愛陳震郊野學園位於明愛營地附近，營地能提供住宿課程的膳宿需要。
2. 香港明愛獲得陳震夏信托基金支持。
3. 當時明愛高層包括力理得神父、楊鳴章神父及李崇德太平紳士一致支持成立郊野學園。
4. 長洲具有豐富的考察點，如海岸綫及生物多樣化。

上述因素皆使明愛陳震夏郊野學園於一九九六年孕育並在這二十年內穩定成長。其中一九九二、一九九五及一九九七年所拍攝的航空照片分別展示了郊野學園不同階段的發展。



## Emergence of Caritas Chan Chun Ha Field Studies Centre in Cheung Chau

Sai Kung Field Studies Centre was over-subscribed since its commencement in 1970s. The participating schools had to wait for two to three years in order to join the Advanced Level Biology or Geography residential field courses. As such, the Education Department decided to open more field studies centres to cater for the keen demand for residential courses. Eventually, Vocational Training Education Services (VTES) of Caritas Hong Kong successfully established the third field studies centre in Hong Kong in 1996.

In two interviews with the former Head of VTES, Mr. Lee S.T., Peter and former Principal Inspector, Mr. Law H.L., Stephen, we can summarize the factors accounting for the organization of FSC by Caritas and in Cheung Chau as follows:

1. The present location of Caritas Chan Chun Ha Field Studies Centre is located next to Caritas camps that provide meal and accommodation for the teachers and students of residential courses.
2. Caritas Hong Kong was able to solicit the funding from Chan Chun Ha Charitable Trust for the centre founding.
3. The senior of Caritas Hong Kong in early 1990s including Rev. Lerda, Rev. Yeung M.C., Michael and Mr. Lee S.T., Peter have shown unanimous support.
4. Cheung Chau is a rich field site encompassing fascinating coastal features, biodiversity of flora and fauna.

The above factors have sowed the seeds for the perpetual growth of Caritas Chan Chun Ha Field Studies Centre rooted in Cheung Chau. The aerial photos, taken in 1992, 1995 and 1997, show the stages of development of the Centre.

